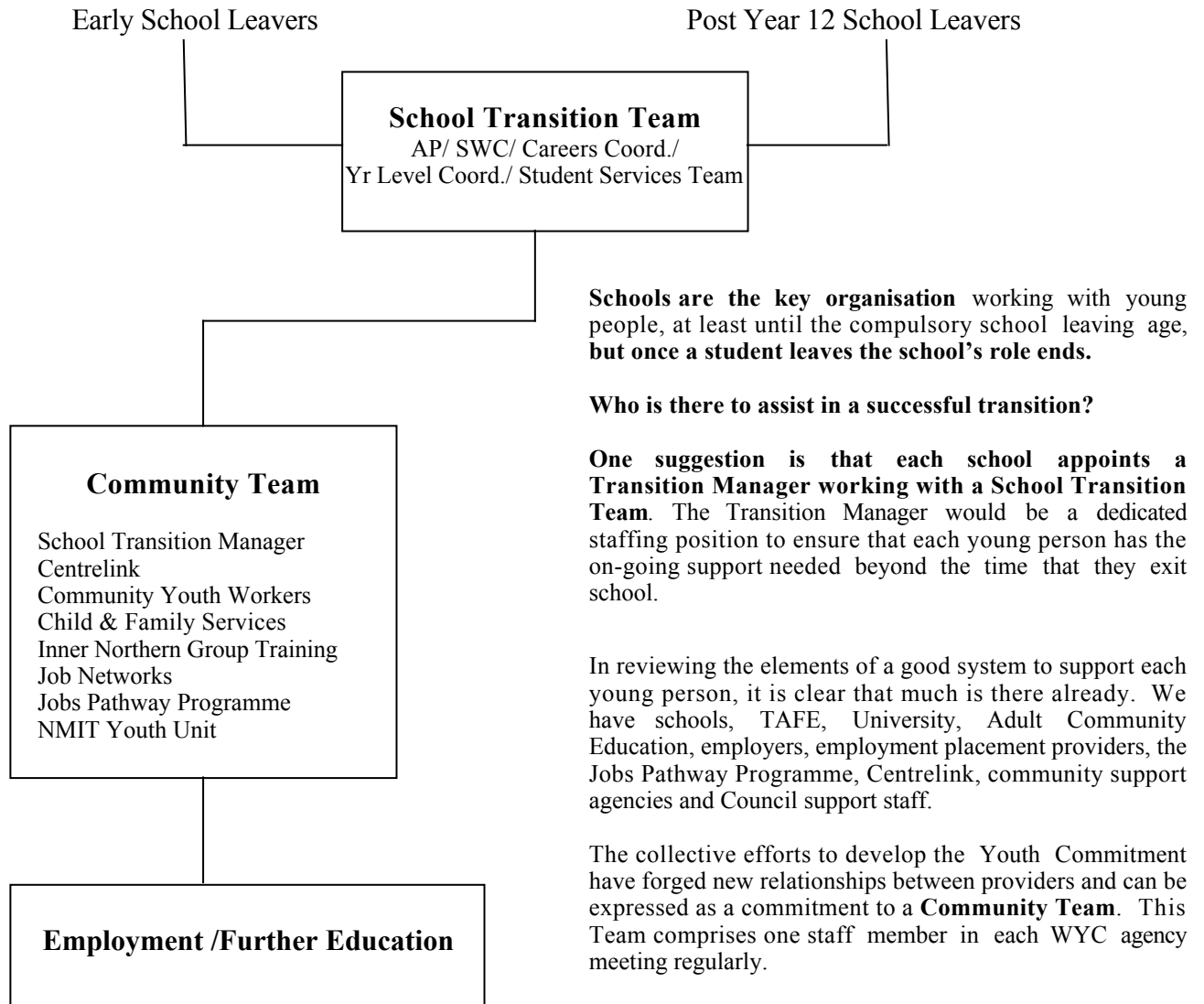


# WYC Community Team Model

## Professional Relationships

### Secondary Students



There is potential for the relevant school based staff to commit to the Community Team, the Early School Leavers Project and the Careers Teacher Network (YEAC) at the same time. This can be achieved in the following way:

- The Community Team meet at least twice term
- Schools provide a minimum of two hours of school time for careers teachers or an appropriate person to attend meetings and that this be included in the position description for the nominated person
- That meetings be held at either the start or the end of the day
- If careers teachers and the Student Destination Project need to meet without other providers, then this meeting be scheduled prior to the Community Team meeting.